

Quality

Our commitments

In a constant requirement for quality, Laboratoires SEBBIN imposes itself to have tests results above the Standard ISO 14607 (specific Standard to mammary implants).

CONTROLS DONE ON ROUTINE*		
TESTS	STANDARD ISO 14607	SEBBIN VALUES
Elongation	≥ 450%	550%
Tear resistance	No specification	≥ 20 kN/m
Tensile test	≤ 10%	≤ 3%
Strength of seals	Elongation to 300% during 10 sec.	Conformable

\*Destructive statistical controls on 3% of the production

#### GEL PENETRATION

Gel penetration : this test, not required by the Standard, is more precise and more representative of the reality than the gel cohesion test; it allows getting a gel with a reproducible quality. It consists of measuring the resistance strength of the gel to the penetration of a constant mass for a given distance: the more the gel resists to this penetration, the firmer it will be and called "high cohesive".

#### 100% OF OUR IMPLANTS ARE CONTROLLED

- Conductivity control.
- Tightness control of the envelope.
- Control on 24 points of the envelope to guarantee an homogenous specified thickness.
- Visual controls at each manufacturing stage.

The anti-bleeding barrier of our envelopes has been tested at the time of our EC mark by the Laboratoire National d'Essais (French governmental laboratory performing this test).

For more information, consult our instructions for use on [www.sebbin.com](http://www.sebbin.com).

#### CONTINUITY

Manufacturing process developed throughout the last 25 years.

#### RELIABILITY

Chemical and biological evaluation of raw materials then microbiological evaluation of each batch. Optical and physical tests of 100% of implants at each manufacturing stage.

#### TRACEABILITY

Each implant is identified by a serial number that allows its traceability from the raw materials used to its implantation. We introduce our new bar code system GSI-128 to improve everyday life.

#### SERENITY

Highly qualified personnel working in clean room.

SEBBIN  
ESTHETIQUE & RECONSTRUCTION  
PARIS

PVP87-A-V01-2010/11

PVP-SAS 39, Parc d'Activités des Quatre Vents - 95650 Boissy l'Aillierie - France  
Tél. : + 33 1 34 42 13 28 - Fax : + 33 1 34 42 16 88 - [www.sebbin.com](http://www.sebbin.com)  
CE 0483 in accordance with Medical Device Directive 93/42 EEC.

ANATOMICAL  
MAMMARY IMPLANTS  
Naturgel™



SEBBIN  
ESTHETIQUE & RECONSTRUCTION  
PARIS

Recreating harmonious bodies for a new vision of rebirth.



# The concept



With the help of famous surgeons of its Academy, Laboratoires SEBBIN have designed an anatomical mammary implant of new generation.

This implant exists in two heights : Short (S) or Tall (T) and in three projections : Low (L), Moderate (M) or Full (F).

	LOW PROJECTION	MODERATE PROJECTION	FULL PROJECTION
TALL HEIGHT			
SHORT HEIGHT			

# The references



TALL HEIGHT / LOW PROJECTION

BASE (mm)	HEIGHT (mm)	PROJECTION (mm)	VOLUME (ml)	REFERENCE
105	112	37	215	LSA TL 215
110	117	39	250	LSA TL 250
115	122	41	285	LSA TL 285
120	127	43	330	LSA TL 330
125	132	45	375	LSA TL 375
130	137	47	420	LSA TL 420
135	142	49	475	LSA TL 475



TALL HEIGHT / MODERATE PROJECTION

BASE (mm)	HEIGHT (mm)	PROJECTION (mm)	VOLUME (ml)	REFERENCE
105	112	44	250	LSA TM 250
110	117	46	285	LSA TM 285
115	122	48	330	LSA TM 330
120	127	50	375	LSA TM 375
125	132	52	420	LSA TM 420
130	137	54	475	LSA TM 475
135	142	56	530	LSA TM 530



TALL HEIGHT / FULL PROJECTION

BASE (mm)	HEIGHT (mm)	PROJECTION (mm)	VOLUME (ml)	REFERENCE
105	112	51	290	LSA TF 290
110	117	53	335	LSA TF 335
115	122	55	380	LSA TF 380
120	127	57	425	LSA TF 425
125	132	59	480	LSA TF 480
130	137	61	535	LSA TF 535
135	142	63	600	LSA TF 600



SHORT HEIGHT / LOW PROJECTION

BASE (mm)	HEIGHT (mm)	PROJECTION (mm)	VOLUME (ml)	REFERENCE
105	95	37	185	LSA SL 185
110	100	39	210	LSA SL 210
115	105	41	245	LSA SL 245
120	110	43	280	LSA SL 280
125	115	45	325	LSA SL 325
130	120	47	370	LSA SL 370
135	125	49	415	LSA SL 415



SHORT HEIGHT / MODERATE PROJECTION

BASE (mm)	HEIGHT (mm)	PROJECTION (mm)	VOLUME (ml)	REFERENCE
105	95	44	210	LSA SM 210
110	100	46	245	LSA SM 245
115	105	48	280	LSA SM 280
120	110	50	325	LSA SM 325
125	115	52	370	LSA SM 370
130	120	54	415	LSA SM 415
135	125	56	470	LSA SM 470



SHORT HEIGHT / FULL PROJECTION

BASE (mm)	HEIGHT (mm)	PROJECTION (mm)	VOLUME (ml)	REFERENCE
105	95	51	245	LSA SF 245
110	100	53	280	LSA SF 280
115	105	55	325	LSA SF 325
120	110	57	370	LSA SF 370
125	115	59	415	LSA SF 415
130	120	61	470	LSA SF 470
135	125	63	525	LSA SF 525

Our anatomical mammary implants are sold sterile, single-use, by unit.

# The Advantages

## IDEAL ASSOCIATION

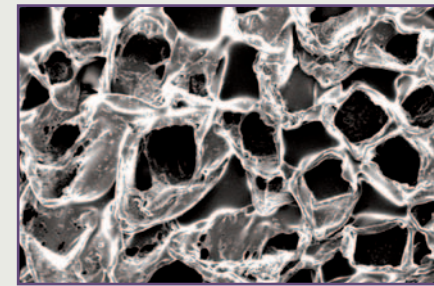
Our anatomical mammary implant is the result of a right adequation between the Naturgel™ qualities, an appropriate envelope and an optimal filling with this gel. The softness and the good memory of our gel guarantee a good distribution in the shell, a natural feeling thus a durable anatomical shape.



## TEXTURE

Our texture, specially developed for this type of implants, is sufficiently rough to limit the implant rotation but remains very soft to avoid any excessive inflammatory reaction and its consequences.

Pores average depth = 460 μm  
Pores average diameter = 490 μm



## POP™

Our digital points POP™ (Palpable Orientation Points) have been inserted between the top layers of the shell in order to avoid any possible detachment of them. They are placed on the anterior and posterior faces to be easily felt whatever is the approach.

POP inside the shell layers

